

biltrax

July 2022 | Issue 04

IDYLLIC

Residential Spaces

Sanjay Puri Architects

Lyth Design

Zero9 Architects

Red Architects

Murali Architects

De Earth

Dhvani Shah Design Studio

Architecture Discipline

Studio AKDA

Quirk Studio

Colston

Rohit Suraj

Rudraksh Charan

Rohina Khira

Gaurav Gupta

Swati Dike

**biltrax
media**

Contents

04 FROM THE EDITOR'S DESK

Neha Tambe, Associate Editor at Biltrax Media, explains her idea of an ideal residence.

05 HOUSE X

With this house, Studio AKDA hopes to reverse that trend. They hope to create a truly responsible architecture that belongs to the time in which it was designed and built.

11 UNGREY

The project, unGREY, is a lesson in "Bold is Beautiful."



17 VINOD RESIDENCE

The Vinod Residence, designed by Murali Architects, combines rustic brickwork with parametric design to create a striking sculptural façade.

21 AIRAVAT

The house spreads across 2790 sq.m. and resembles a spaceship. The unusual futuristic shape of the structure exudes a contemporary vibe.

27 CHATEAU GRANDEUR

Dhvani Shah Design Studio has designed a neoclassical style apartment, Château Grandeur, that exhibits opulent aesthetics with a touch of modern luxury.

31 VIBES

"Vibes" is a striking yet rooted project, designed by 'De Earth' at Thalassery in Kerala.

36 LANDSCAPE DESIGN FOR RESIDENCES

Landscape Designer, Swati Dike, explains how one can design ideal landscapes for residential spaces.

37 P1B IVY

PIB IVY, designed by Architecture Discipline, is the epitome of modernity. . The design provides a required depth while exuding bright vibes that instantly uplift the mood of the residents.

42 CURATING THE MOST EFFICIENT STORAGE UNITS FOR THE BEDROOM

Tips from Disha Bhavsar and Shivani Ajmera, founders at Quirk Studio

43 STUDIOS90

Wrapped in a tinge of culture, Studios 90 is a residential project located in Kodla, Karnataka designed by Sanjay Puri Architects

47 COLSTON

Anil Ahuja, Managing Director at Colston, talks with Biltrax Media about the latest products from Colston that are redefining bathroom design trends by giving new impetus to the architecture of bathrooms.

50 10 TIPS ON MAINTENANCE AND LIVING WITH WHITE

Rohina Anand Khira, Founder and CEO at AA Living, shares quick tips on maintaining all-white interiors..

51 URBAN ZEN

A passionate proponent of independent thinking and creative change, Rohit Suraj, Urban Zen's Founder and CEO, talks to Biltrax Media about Idyllic Residential Spaces and their importance.

55 42MM ARCHITECTURE

The architecture of the idyllic residential space comprises everything from technology to personalisation. Rudraksh Charan, the principal architect of 42 MM Architecture, speaks to Biltrax Media about the design principles of an ideal residential setting.

61 CHOOSING THE RIGHT COLOUR SCHEME FOR YOUR LIVING ROOMS

Gaurav Gupta, Art Ador, enlightens us with quick tips on decoding a correct color palette for living areas.

From the Editor's Desk

Dear Readers,

A home is no longer just for sheltering purposes. In the last couple of years, the world as we know it has changed significantly owing to the COVID-19 pandemic. This pandemic has forced us to rethink the way we lived and worked. It has pushed us to work from home and taught us to prioritize our family's and our own mental, physical, and emotional health and well-being. With more and more purchasing power and blue collar to white collar job transitions, owning or renting a home has become more accessible than ever.

Everyone wants a space to call their own. A place where they can decompress without any interference or stress. A place which they can personalise to their taste. A place that showcases their personality and their likes and dislikes. A place where they don't have to put up walls or pretend to be someone they're not. And with a shift to work from home opportunities and hybrid working, a home also doubles up as a place for work.

It is with this in mind that we at Biltrax Media chose to feature prominent thought leaders, young professionals, hospital design entrepreneurs and building material manufacturers that have actively and consciously focused on residential designs and products in our fourth issue of the magazine, aptly titled 'Idyllic Residential Spaces'. From independent bungalows and row houses to apartments, from traditional design ideas to modern design styles, from using traditional materials conventionally to using unconventional materials conventionally, this issue aims to cover details of the construction industry including – new trends in residential architecture, upcoming residential design projects, and the work that various organizations undertake in the industry.

The reality is that the pandemic has forced us, as architects and designers, but most importantly as humans, in the way we live. It has pushed us to self introspect our habits and best practices and made us more aware of the fact that the post pandemic world is going to have to adapt and adopt the standards created during and due to the pandemic in order to better facilitate the residential design and the way we live. The sooner we accept this and incorporate it into our daily life and designs, the better our outcomes will be. So here's to celebrating thought leaders and their work where they went above and beyond, thinking outside the box and creating functional masterpieces that set the tone for residential architecture of the future!

NEHA TAMBE

Associate Editor at Biltrax Media

Head of Marketing, Communications and PR at Biltrax Construction Data



About BILTRAX MEDIA

Biltrax Media is owned & operated by Biltrax Construction Data. It chronicles **architecture** and **construction** with a focus on the role of **data analytics, technology, engineering and government policies on design**. It brings to the fore ideas and perspectives from a more rounded spectrum to delve deep into industries that play a huge role in the systems but are seldom spoken about in **mainstream media**.

FOCUS AREAS



UPCOMING PROJECTS



PROJECT DESIGN



PRODUCT DESIGN



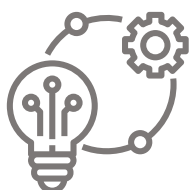
EXPERT'S SPEAK



AEC NEWS



INSIGHTS



TECHNOLOGY



RESOURCES

BILTRAX CONSTRUCTION DATA

Biltrax Construction Data is India's leading market intelligence platform focussing on the building construction industry.



Smart Specification Tagging

200+ tags covering Project Amenities, Material Specifications, Sustainability Aspects & other Project Features gathered through on-ground research approach



Tender Opportunities

Covering significant early stage opportunities in public sector projects along with their documents, mapping of Owners, Architects, Consultants & Contractors



Industry Relationships

Relationship Analytics covering Architects, Consultants, Contractors & their historical relationships with Project Owners



Visit: biltrax.com



Email: contact@biltrax.com



WHY BILTRAX?

Biltrax helps you to **connect with the right projects, companies, and people involved**. It provides you with **tools and intelligence** that create and find **new opportunities**, thereby helping your sales team to **strategize and execute** them.



Data & Analytics Approach

Each parameter is documented to be independently analyzed to uncover deep insights on specific Geographies, Project Types, Size, Height & many more quantitative filters.



Client-Centricity

Motivated, Committed & Friendly Team to assist Clients on a priority basis. Exhaustive Personalized Client Support included in Subscription by Default



Use Case Customization

Ability to Customize Data & Unearth Interpretations for Client Specific Use-Cases.



Utility & Positioning

Besides being a source of Sales Leads, Biltrax is positioned as a Strategy, Business Development & Marketing Tool for Management & CXOs

Biltrax allows you to analyze, target and build **industry relationships** in both public and private sector projects. It is **Empowering Sales, Marketing & Strategic Initiatives** for leading players in Indian Construction Industry.

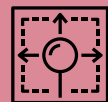


biltrax | Data
www.biltrax.com | Insights
Analytics

PROJECT UPDATES JULY 2022



627+ Total Projects

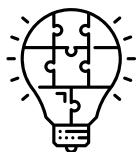


196+ Million – Sq. ft.
Construction Area

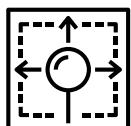


54,956 INR-Crore
Construction Value

PRIVATE SECTOR PROJECTS



371+ Projects



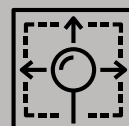
153+ Million-Sq.ft.
Construction Area



41,455+ INR-Crore
Construction Value



256+ Projects



42+ Million-Sq.ft.
Construction Area



13,501 INR-Crore
Construction Value

Visit **biltrax.com** to sign up for a free demo or email us at
contact@biltrax.com

HOUSE X

THE BRICK HAVEN

By Studio AKDA

Written by: Keya Desai

Photographs by: Ricken Desai

Studio AKDA aims to make regional specificity and sustainability intrinsic to the design process and the final product. Every object produced undergoes the same scrutiny of process and exactitude. This is based on suitable materiality and innovation, irrespective of appearance. Contemporary buildings often struggle to encompass the larger issues of sustainability, efficiency and frugal use of resources. The choice to conform to predetermined aesthetic criteria instead. With this house, Studio AKDA hopes to reverse that trend. They hope to create a truly responsible architecture that belongs to the time in which it was designed and built.



“ Envisioned with three primary design elements on the front facade, the house is a sight to see. The living space in a circular drum juxtaposes against the triangular wedge that contains the services, while a rectilinear cube establishes the boundary conditions of the house.



In a rapidly densifying part of Noida, a suburban region to the east of New Delhi, the project sits on 3200 square feet (ca. 3 a) site. With a built-up area of 1760 square feet (ca. 164 m²), the residence is iconic and stands out. The house is next to a series of private family residences. The zoning plan caused sharing a blank wall with the neighbour to the south. This pushed the building line back from the site edge in the remaining directions. Conceived as a composition of primary volumes and designed for single-family use, the design of this three-bedroom house has the potential to add a fourth bedroom should the need arise.

The architects envisioned the house to have three primary design elements on the front facade. The living space, in a circular drum, juxtaposes against the triangular wedge that contains the services. A rectilinear cube establishes the boundary conditions of the house. The building crafts an identity not only by geometrical forms but also by materiality. Using a perforated brick screen, the structure celebrates the famed Indian sun while providing shade along the front surface of the wedge.



In order to amplify the scale of the living areas and maximise spatial planning, no partitions divide the living and dining areas.

Studio AKDA carved much of the circular living space out along the views toward the community park on the front east corner of the site to allow visual connectivity from the enclosed internal spaces to the front garden and the park. Framed in a rectilinear concrete square that is aligned to the diagonal east-facing cut-out, the whole composition orients the overall geometrical composition. In order to amplify the scale of the living areas and maximise spatial planning, no partitions divide the living and dining areas.

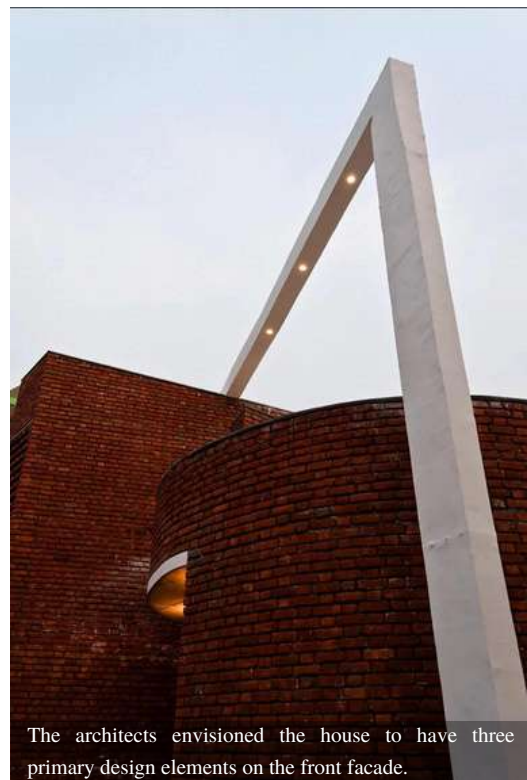
On entering, a unified space greets the visitor, opening up to the outdoors in three directions. This central space, segregated from the elements by floor to ceiling windows, combines privacy with open-plan living. It forms a seamless connection to the framed views. The architects kept an existing ‘Ber’ tree (or *Ziziphus Mauritiana*) towards the rear of the site. Orchestrated around this Ber tree, the rear bedroom and dining space create an external courtyard that acts as a shaded spill-out zone.

A small foyer connects the living area to two bedrooms on the ground floor. These bedrooms have attached bathrooms. Studio AKDA also connected the bedrooms with a staircase that leads to the bedroom on the first floor, opening up onto the terrace. An oculus over the stair washes the entire space with sunlight, illuminating the central part of the house.

Large windows with thin black metal frames allow the internal living spaces to flow into the front and rear spaces at the ground floor level. The square metal frames also allow for ample light and ventilation into the building, whilst reducing the visual density of the different volumes. Shaded with a traditional brick screen or jaali, the windows of the toilet block in the front wedge add to the engaging facade of the house. The traditional brick screen or jaali also provides thermal comfort and privacy on the inside and a dramatic and dynamic interplay of light and shadow on the exterior.



An oculus over the stair washes the entire space with sunlight, illuminating the central part of the house.



The architects envisioned the house to have three primary design elements on the front facade.

Built at a budget of less than \$18 per square foot within a timeframe of 6 months, the house establishes itself as a prototype of low-cost, sustainable urban housing. This is to ensure a pragmatic shift in the overall approach to design. Construction strategies adopted primarily include using concrete and brick, lowering the cost of construction of the home considerably while allowing for endurance and material expression. The cost of the metal frames in the windows is much lower than compared to typically used wooden frames that need to be coupled with additional grills for safety.

The flooring is a light grey, locally sourced Kota stone that compliments the overall aesthetic of the home. LED lighting and low-flow faucets enhance the energy efficiency of the building, as does the overall plan, designed to minimise heat gain in summers while providing adequate levels of daylighting. Soft paved surfaces around the house allow for groundwater recharging and reduce reflective glare into the building. Reflective tiles on the roof reduce the heat load, and the exposed concrete ceiling in the interiors will not need any repainting.



The building crafts an identity not only by geometrical forms but also by materiality.

Buildings should represent the epoch in which we build them, and this has always been true for monumental buildings throughout history. Culturally, as the world moves towards a more sustainable approach to building design, consumption and resource allocation, the extravagance of construction methods and choices over the past century has rightfully come under great scrutiny. The economic turmoil of the past decade has also raised important issues regarding capital investment in architecture. Today, cities require prudent construction solutions that include the use of technology regarding the context that does not compromise on spatiality or aesthetics, but augments them in a more appropriate manner.

“ Envisioned with three primary design elements on the front facade, the house is a sight to see. The living space in a circular drum juxtaposes against the triangular wedge that contains the services, while a rectilinear cube establishes the boundary conditions of the house.



Large windows with thin black metal frames allow the internal living spaces to flow outside at the ground floor level.

unGREY

WINNING HEARTS WITH FLYING COLOURS

By ZERO9 Architects



Written by: Sakshi Agrawal
Photographs by: Yadnyesh Joshi



Patterned upholstery, chic décor, and dramatic planters create an atmosphere of enchantment.



Unique furniture pieces in bright pop colours add a vibrant touch to this beautiful, colourful apartment.

The project, unGREY, is a lesson in “Bold is Beautiful.” This Mumbai home designed by ZERO9 Architects makes a powerful statement using colours that energise the space with a cache of bright and cheery hues. Owing to the clients' fascination with colour and their desire to have it throughout their home, the architects used striking colours in all elements. These include wall colours, wallpapers, accent furniture, doors, furnishings, and decor. From vivid blues to juicy oranges, and happy pinks to striking greens, a tour of this house will gradually reveal many favourites from your crayon box. The playfulness of these colours reflects the very spirit of the residents.



They've used walls and floors as canvases, pouring blocks of different colours to form an artistic expression.

This lavish 4 BHK Apartment filled with vibrant colours suffuses a new definition of serenity. The architects, Prashant and Anu Chauhan say, “The second wave of COVID-19 showed some of us the most ‘Grey Times’ we have seen in our entire lifetimes, and right after this period the clients approached us to make a self-sustaining, happy home which reflected their panache for colours.”

Living Room

The architects have used the principle of colour blocking in the living area to create a bold aesthetic appeal. While having defined spaces and functions, the living, dining, and bar areas have a fluid spatial quality. They've used walls and floors as canvases, pouring blocks of different colours to form an artistic expression. This also divided the spaces to create an open-plan layout. The furniture acts as a wonderful accompaniment to the backdrop. Every element of the living room becomes a style statement. A juicy orange console is a creative approach to storage and display. The swing seamlessly integrates into the layout. The bold, red oval bar unit pops from the turquoise wall and sets its own identity. Patterned upholstery, chic décor, and dramatic planters create an atmosphere of enchantment.



The Master bathroom features green accents along with beige tones imparting serenity to the room.

Master Bedroom

The Master bedroom features green accents along with beige tones imparting serenity to the room. A botanical wallpaper brings an ecological conscience to the room, heightening the tropical feel. The walk-in closet has hand-polished louvred doors in emerald green opening into the master bath. The black and white patterned flooring in the master bath creates drama.

The architects have coated the bathroom walls with green micro-concrete, giving it a monolithic design that is seamless and free from joints. The floating vanity in the bathroom has mirrored shutters that reflect light and make the bathroom appear larger.



A botanical wallpaper brings an ecological conscience to the room, heightening the tropical feel



The Daughter's Bedroom is a pastel-pink escape to a fantasy land full of dreamy hues, patterns, and textures.



A bunk-bed setting gives the appearance of a multipurpose playhouse which has room for activities like reading, playing, and sleeping.



These blush shades extend into the bathroom as well, with the application of micro-concrete on the existing walls.

The Daughter's Bedroom

The Daughter's Bedroom is a pastel-pink escape to a fantasy land full of dreamy hues, patterns, and textures. A bunk-bed setting gives the appearance of a multipurpose playhouse which has room for activities like reading, playing, and sleeping. Having such a bunk-bed arrangement ensures that the child remains active by climbing up and sliding down the bed structure. These blush shades extend into the bathroom as well, with the application of micro-concrete on the existing walls.

Her Home Office

‘Her Home Office’ is a mini library with a cosy chair to read and relax in. The custom-made, blue terrazzo top, work desk by the window has a lift mechanism which provides the user flexibility to stand or sit while working. The electric indigo blue pairs beautifully with the wooden floors laid in a chevron pattern and sets a nice setup for the sculptural feminine swan lamp.

His Home Office

Contrary to the multi-hued scheme of the house, ‘His Home Office’ is colour-starved. Basic greys and warm browns give a relaxed pace to the room, creating an excellent den for him to cut-off distractions and concentrate on his work. Explaining the versatility of the designed spaces, the architects explain, “The space doubles up as a guest bedroom when required, with a sofa-bed and movable desk setting, that gets tucked into the furniture when not required.”

By creating a cocktail of colours, the architects have ensured that there’s no dearth of colour in the residents’ lives.

“In short, this is a home, as unGREY as its lovely dwellers.”



‘Her Home Office’ is a mini library with a cosy chair to read and relax in.



‘His Home Office’ becomes an excellent den to cut-off distractions and concentrate on work.

VINOD RESIDENCE

MARRYING BRICK TO PARAMETRIC DESIGN

By Murali Architects

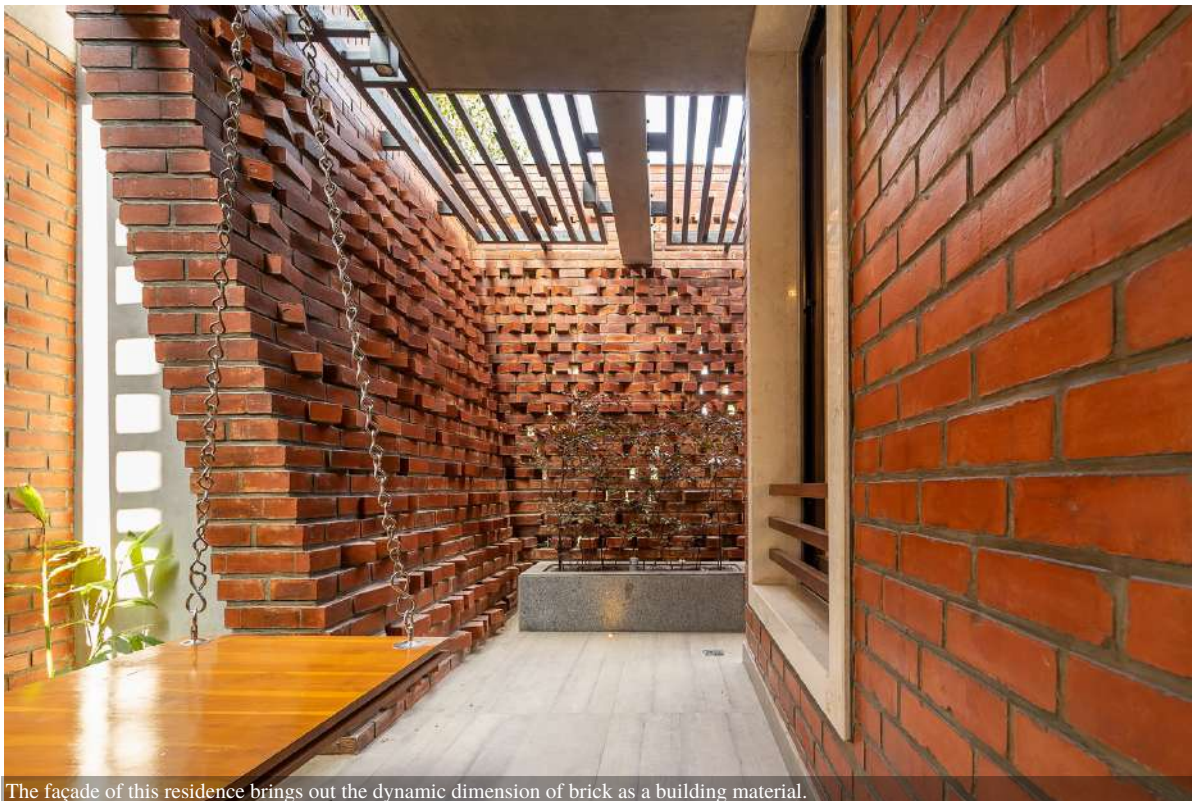


Written by: Sakshi Agrawal

Photographs by: Triple O Pixel – Binsan Oommen

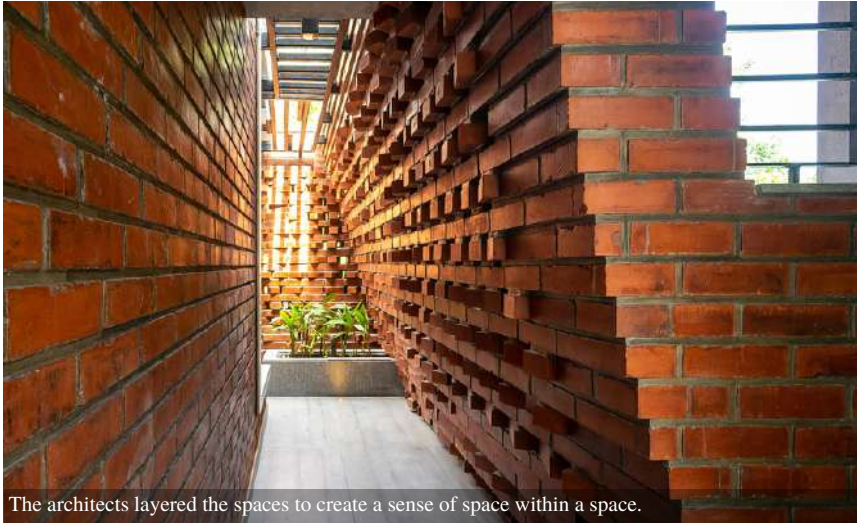
The Vinod Residence, designed by Murali Architects, combines rustic brickwork with parametric design to create a striking sculptural façade. The design team has created a perfectly balanced combination of regionalism and futurism in this architecturally clever residence. In Coimbatore, they positioned the residence in a close-packed plot of 3400 sq. ft. area. The residence sports a double-skinned façade, offering the utmost privacy to its residents. A central courtyard and various pocket courts on different levels balance this introvert configuration.

“ The façade of this residence brings out the dynamic dimension of brick as a building material. By controlling individual bricks, their courses, angle of rotation, and spacing, the architects have unveiled a novel method in brick construction. This poetry in bricks continues in the interiors as well, where brick and light work together to create statement interior walls.

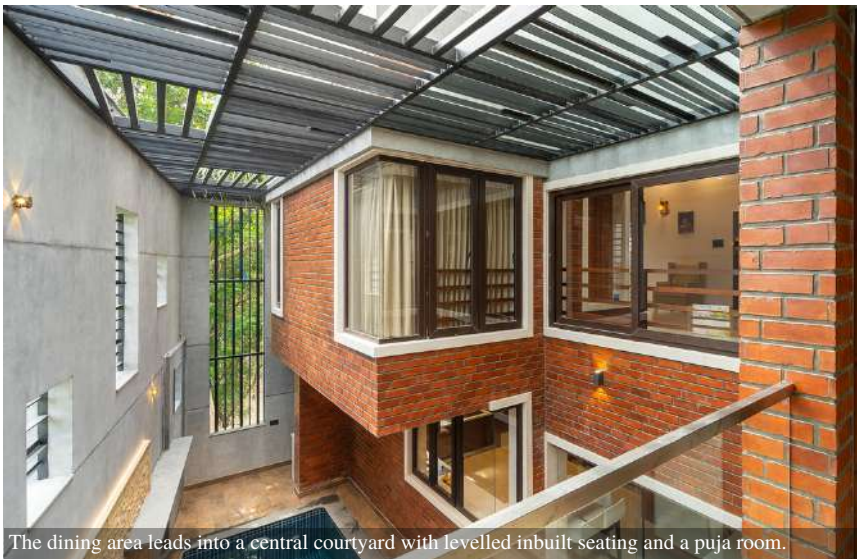


The façade of this residence brings out the dynamic dimension of brick as a building material.

The architects planned the house in an introverted fashion, with a massive exterior built form. Privacy and security were of key importance, hence, they cut the visual connection with the exterior world off. Inclined brick walls welcome the users warmly but boldly into the house. However, the introverted configuration creates beautiful vistas and sight lines within the house. The architects layered the spaces to create a sense of space within a space. Multi-level floors connecting spaces with open courtyards and glass floors were outcomes of spatial layering.



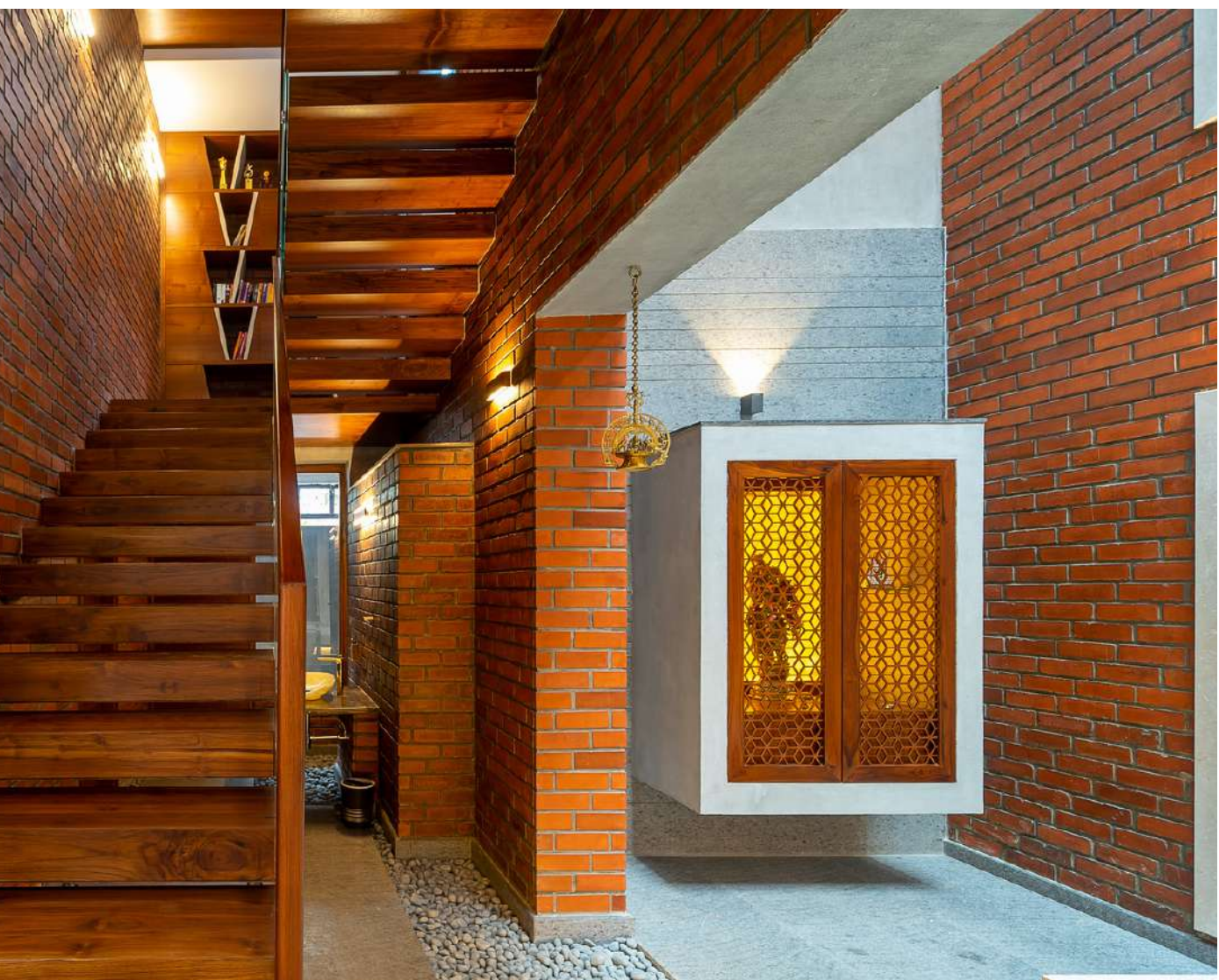
The architects layered the spaces to create a sense of space within a space.



The dining area leads into a central courtyard with levelled inbuilt seating and a puja room.



Green courts surround the double-height living room on the ground floor and give it a fresh, welcoming feel. The dining area leads into a central courtyard with levelled inbuilt seating and a puja room. A large sky court containing a swimming pool connects the dining area, kitchen, and gym room, creating a serene aesthetic that provides visual connections between spaces. The first floor comprises two bedrooms. One is the primary bedroom, which features a landscaped courtyard and a private balcony on either side. The other is the daughter's bedroom, with an elongated bay window with a feature inclined wall.



“ The architectural style of the Vinod Residence is unparalleled. Building this architecturally clever residence with great attention to detail is part of what makes it so unique. By introducing many pocket courts on different levels and incorporating a large central courtyard, the architects have been able to flood the interiors with ample natural lighting. The mid-landing leads to a beautiful and serene reading nook. With its greenery and swing, it's the perfect place to lose yourself in nature while reading.

AIRAVAT

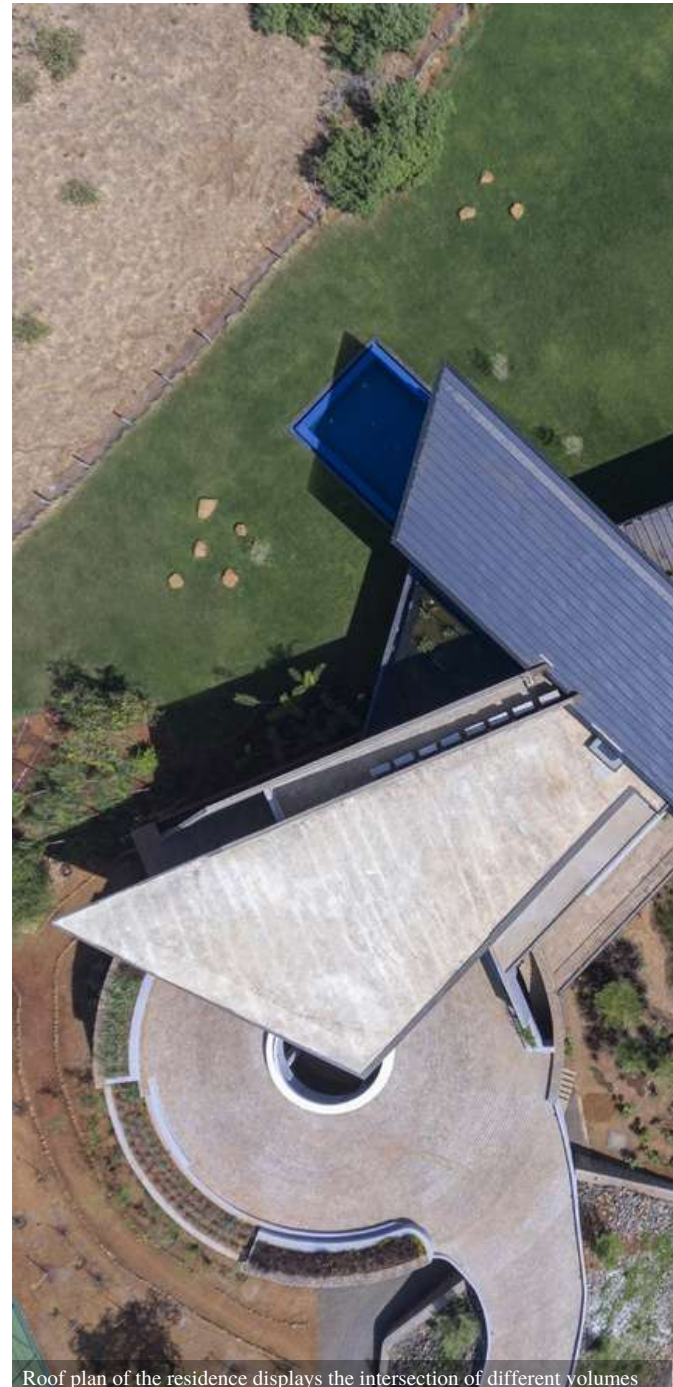
AN ODE TO THE MOUNTAINS

By Red Architects + Lyth Design

Written by: Sarvesh Joshi

Photographs by: Fabien Charuau

Located on a plot of land in Khopoli, overlooking the mighty Sahyadri mountain range as its picturesque backdrop, is a condo property called Airavat. The residence is designed by Apoorva Shroff, a former partner at reD Architects, who has now founded her own design venture under the name of Lyth Design. The house spreads across 2790 sq.m. and resembles a spaceship. The unusual futuristic shape of the structure exudes a contemporary vibe. The design team led by Apoorva Shroff has tried playing with the form by intersecting vertical planes to create habitable spaces. The contrast between the vertical intersecting planes of the residence and the organic landscape around it looks stunning. Marked using different materials, the spaces are segregated in the design. This reflects on the facade, creating a sleek and contemporary visual which is a treat to the viewer's eyes.



Roof plan of the residence displays the intersection of different volumes

“

As one moves into the residential zone, the structural members of the master bedroom and other bedrooms are planned to create column-free corners to craft uninterrupted panoramic views of the Sahyadris.



Designed as an ode to the magnificence of the mountains, ‘Airavat’ refers to the ‘elephant of the clouds’. The juxtaposition of different spaces has led to a layered design which reveals itself in parts forming a cohesive narrative. Designed in a manner such that two parallel walls act as the main axes that cut the house and seamlessly connect the different volumes. The triangular courtyard formed in the centre is the manifestation of these intersections. Built on contoured land, the residence has three zones, each built on a different level.

Designed around the courtyard, the Public, Private and Recreational blocks create a seamless design. The public zone, located on the highest contour, comprises the living room, dining area and kitchen. The recreational zone, designed on the middle level, contains the recreation spaces including the family den, and the TV room. The private zone, located on the lowest level comprises four bedrooms.

The design uses different materials to create a different visual identity for spaces, creating a sleek-looking facade. Public spaces use glass and steel, while private spaces use slate stone.



Metal columns are left bare to exude a modern and futuristic feeling at the first glance

Designed to overlook the pool on the mid-level, is the living room located on the highest level. Large glass windows open up the space to the panoramic views of the Sahyadri mountain range. The interiors of the living room are minimalistic and add warmth to the space. The seating arrangement consists of sofas in an earthy tone and an abstract shaped glass centre table adorned with artefacts. The seating exudes a modern and contemporary vibe. The highlight of the living room is the Piano, which is placed near the large window.

A black shiny piano with a black piano chair overlooking the outside view adds to the sense of calm provided by the space. Incorporated into the design deliberately, glass establishes a visual connection between the spaces. Large glass walls used for the facades open up the user to a serene view. Sandwiched between the two main walls is a perforated staircase, connecting the different levels of the contoured site. Segregated by a tinted glass wall, the dining space abutting the living room continues the same minimal and contemporary aesthetic.



A grey marble dining table with matching chairs is placed in the centre of this space. The dining area also has natural elements like plants which add life to the space. Carefully curated to compliment the real plants placed beside the dining table is a chandelier with artificial leaves hanging just above the dining table. The chairs around the dining table have a sleek dark brown edge. Brown marble flooring completes the overall look of the space. The TV room, on the mid-level, is an extension of the dining space.

The two spaces are divided with the metal fins clad in wallpaper. The flooring in the TV room transitions from brown marble to slate stone which creates a warm ambience that is best suited for a television watching experience. Also situated on the mid-level on the mid-level is an 18 feet double-height space at the heart of the house. The space has a swing overlooking the lawn in the front of the house and the open-to-sky triangular courtyard at the back. Designed to look both outward and inward, the family den receives ample natural light.

Designed to provide a plush living experience while paying homage to the Sahyadri mountains, are a series of bedrooms located on the home's lowest level. The rooms have large windows and open up to a lush green lawn. A minimalistic design style has been used to design the rooms. The muted tone walls complement the flooring in an earthy tone. The interior design of the bedrooms is functional, and the serene view of the mountains becomes the main protagonist for the viewer. The lush green lawn just outside the rooms adds to the plush feeling provided by the space.

As one manoeuvre through the home, one experiences a seamless transition from one space to another as each space embodies a different character, but has the same underlying theme. Different materials used in the design are responsible for the unique character of the spaces. The metal structures which are left bare exude a modern and futuristic feeling at first glance, On the other hand, spaces incorporating stone merge with the context, leading to a seamless transition between the built and natural environment. The overall geometry includes sharp edges and the intersections of different forms, which ultimately results in the formation of a unique structure.



This modern home stands as a stark yet beautiful juxtaposition against the ancient Sahyadri Mountains

“ This unique design form certainly stands out from the context but does not overpower the magnificence of the Sahyadris.



The living spaces overlook a central courtyard



The vibrant green central courtyard brings in the wonderful natural outdoors inside the home

CHATEAU GRANDEUR

OPULENT AESTHETICS WITH A MODERN TOUCH

By Dhvani Shah Design Studio

Dhvani Shah Design Studio has designed a neoclassical style apartment, Château Grandeur, that exhibits opulent aesthetics with a touch of modern luxury. The 158 sq. m. (1,700 sq. ft.) residence in One Hiranandani, Thane, includes four bedrooms and three bathrooms. The house accommodates a family of four – a couple and their two children. Planned and executed under the client brief, the classical yet contemporary house exudes affluence. Château Grandeur is a trendy yet elegant space with a unique and timeless charm. The clients own a diverse collection of artefacts, which includes both modern art and antiques. The design team successfully incorporates this collection into their design scheme. They present a neoclassical concept in the space through design and decor interventions.



Château Grandeur is an apartment with opulent aesthetics and a modern touch

Written by: Keya Desai

Photographs by: Kuber

The Entrance, Foyer, and Bar Area

The main entrance opens to the foyer with a bar section with chequered floors. With minor structural changes, the design team created a large foyer with a bar section, having sleek and classic chequered flooring. The bar unit comprises a fluted grey and black polyurethane finish on the shutters with gold metal legs and a black Marquina marble tile counter to give it a burst of extravagance. The extravagant bar counter with the black Marquina marble top at the entrance helps the clients unwind after a long day of work/hard day's work.

The Living Room, Fireplace, Dining Area

The studio furnished the living room with a gorgeous blue sofa and circular glass bell centre table by Mauble, bringing in a modernised touch. Beige Italian marble floor runs through the entire apartment and imparts a certain sense of warmth to the home. They infused the area with natural light from floor-to-ceiling windows that offer sweeping views of the city.

An attractive fireplace is another essential feature of the house, which adds to the aesthetic value of the living room. It is clad in black Marquina marble and enhanced by a mirror with a gold metal frame flanked by wall lights. The entire fireplace showcases neoclassical artefacts and sculptures, beautifully balanced out by the new age chequered table from Defurn. Some artefacts in the house are from Philips Antique Store and Taherally's Sons.

The design team displays neoclassical artefacts and sculptures on the fireplace mantle. This beautifully balances the 21st-century chequered table from Defurn. They used patterned tiles for the balcony to break the monotony. Integrating the barbecue makes it the perfect place to relax and spend quality time with friends and family.

An open layout connects the light-filled living room to the dining area. A six-seater, custom dining table with nude pink chairs is in the dining area. The space looks even more expansive with the addition of a mirrored wall to the dining area. Making the living room more special and evoking feelings of warmth and security is a fireplace with black Marquina marble tile for aesthetic purposes.



The primary bedroom takes on an Indian approach to neo-classical design



The primary bedroom has touches of opulent modernity without steering away from the neo-classical theme

The Primary Bedroom

The primary bedroom features a royal teak wood four-poster bed with a stunning damask wallpaper design created to imitate the fine patterned fabrics with the hand-painted motifs of Kalakaarihath. A polyurethane-finished grey wardrobe with coordinated metal handles complements the bed rest. A passage clad with a tinted mirror leads to the teak wood dressing table with stool from Defurn.

Adding a pop of colour into the otherwise neutral palette, the designers included a Marsala-coloured chest of drawers with tinted mirrors at the back and chandeliers on top. In the primary bathroom, they added black and white patterned tiles to the flooring and included a luxurious bathtub. A half wall in black Marquina marble lined with wooden tiles above balances out the entire space.

The Guest Room

The guest room also has a neoclassical design aesthetic, indulging in soft colours, and textures. A subtle mint-coloured wainscoting panelling pairs nicely with the whimsical floral wallpaper from Missoni. The onion pink sofa-cum-bed with the black polyurethane-finished table ties the entire space together/ brings the entire space together/ brightens up the entire space.

The Children's Bedroom

While the parents' room has a neoclassical design aesthetic, the sons', is modern and functional. The children were huge fans of the movie Transformers, and that is how the design team incorporated the customised Transformers' wallpaper above their bunk beds.

The Mandir

Adding peace and tranquillity to this sublime residence is a mandir specially carved with inlay work from Rajasthan. Colourful patterned tiles for the floor and olive-green storage help strike a perfect contrast and complete the whole look.

The home features a rich tapestry of hand-painted motifs, traditional rugs, drapes and sculptures, which beautifully balance out the understated luxury. Throughout the residence, the design team mixed modern and classic styles into a neoclassical design that portrays the client's vision and fulfils their desire for an opulent home.



While the parents' room has a neoclassical design aesthetic, the sons', is modern and functional/



Adding peace and tranquillity to this sublime residence is a mandir specially carved with inlay work from Rajasthan.

VIBES

STRIKING YET ROOTED

By De Earth

"Vibes" is a striking yet rooted project, designed by 'De Earth' at Thalassery in Kerala. The project spans across a land parcel of 3800 sq. ft. In the busy world that we are living in today, one needs a place to let go and relax. With the same notion, the design team led by Ar. Vivek PP and Ar. Nishan M from 'De Earth' has designed this warm and cosy residence. The vernacular design elements used in the space indicates volumes of the attention to detail that the design team has delved into while designing this striking residence aptly termed as "Vibes". These vernacular design elements and the overall residential design transports users back in time.



"Vibes" is a striking yet rooted project, designed by 'De Earth' at Thalassery in Kerala

Written by: Keya Desai

Photographs by: Redz Photography



Initially used as a vegetable garden, the site at Thalassery in Kerala was a part of the client's parents' home. It was then developed into a beautiful, striking residence called "Vibes". Enveloped by residential buildings on the northern and eastern edge and a vacant land parcel on the western side, the site enjoys a 3 m wide road in the South direction. With a laterite stone-clad facade, the striking residence, Vibes, reveals itself to the user with a warm and welcoming feeling. Apart from the laterite stone cladding, the residence also makes use of cement textures and tandoor stone paving, thereby adding to its visual appeal.

“

This unique design form certainly stands out from the context but does not overpower the magnificence of the Sahyadris. The minimal design theme followed by the designer and the large windows and glass walls used in multiple spaces is responsible for merging the outside with the interiors.

Providing a smooth transition from the outside to the inside are sit-outs designed along the entrance. These sit-outs create a small verandah which ultimately transitions to the living room. Designed as airy space, the living room has a water body on the south and a garden on the east. Sandwiched between a courtyard on the west and a garden on the east, the living room gets ample sunlight and ventilation. Using leather finish black granite flooring, coupled with a spectacular backdrop of the landscape in the courtyard and the garden, the overall design creates a mesmerising, picturesque effect for the viewers. The chairs, the window and door frames in brown, the flooring in black along with the grey texture of the walls, create a cosy environment. Thoughtfully curated, the sofa in bright orange and the curtains in a muted white tone compliment the entire ambience of the space.



Extending the house outwards to the open sky, the Zen garden creates an organic space and adds a sense of tranquillity. Incorporating different textures such as pebbles, random rubble pavers and a bamboo wall, the Zen garden effortlessly blends the natural environment with the living room, successfully blurring the lines between the indoor and outdoor spaces. Located adjacent to the Zen courtyard garden is an outdoor wash area that is carved out of a monolithic stone block. This adds to the organic character of the home.

Designed at the corner of the room is a raised, rectangular platform for seating. Stacked in the corner of this seating space are the white cushions with yellow and orange embroidery. Adding to the overall comfort of the room, the seating area and the white cushions look aesthetically appealing. Moving towards the rear end, the ground floor features the kitchen and the dining area. Opening up to the courtyard, the dining area with the dining table in earthy tones looks pleasing to the eyes.



The living room is designed using earthy tones with the exception of the bright coloured sofa which becomes a focal point for the viewer

Partially covered in blue chequered tiles, the flooring complements the kitchen cabinets and shelves in a lighter shade of the same colour. Embossed with a vintage wooden texture on the surface, the furniture used in the kitchen reminds one of the simpler times, unadulterated by consumerism.

Situated between the Master bedroom and the living room is a staircase leading to the first floor. Featuring a green finish and wood panelling on the tread, the cantilevered staircase is intriguing to look at. Intricately carved wooden balustrades lead the user to the children's bedroom. Furnished with oak wood the children's bedroom features a bunk bed with solid wood steps leading to the bunk bed. Complementing the organic textures in the space, the flooring flaunts a blue oxide coating. There is a bathroom and a walk-in wardrobe at the end of the room. The bathroom features random rubble natural cladding in the shower area and grey tile flooring in the dry area with an aqua blue accent tile strip.



“

‘Vibes’ is a striking house where one feels belonged. The spaces, designed to soothe the mind of the user, don’t just create a statement, but are purposeful as well. Designed to mutate into various moods during the day and night the colour palette is pleasing to the eye and creates a warm feeling around the house.

Located right in front of the children’s room is a sliding window opening up to a terrace. Featuring wooden textured flooring and a swimming pool, the terrace overlooks the landscaped garden on the ground floor. Designed to embrace all three elements, Earth, Water and Wind, the terrace provides a sense of serenity. Facing the south side of the residence, opening up to the street, is another bedroom comparatively smaller but equally pleasant to look at. Placed in the centre of the room is the queen-sized bed made out of wood and with white bedding.

Moving towards the second floor is a second master bedroom. Placed right at the centre is a large four-post bed in a dark brown frame with white bedding. Overlooking the garden through a large window is a seat designed right in front of the bed. Placed alongside the bed are the side tables in dark brown tones, and exude the same elegance as the other units. Featuring the pitched roof on the exteriors, the room creates an interesting triangular pattern in the interiors. Accentuated on both ends of the wooden ceiling are the clay ceiling tiles with LED strip lights.



Landscape Design for Residences



Swati Dike

Landscape Designer and Planner

The development of cities causes an increase in the exploitation of natural resources more than environmental capacity. As the climate changes, green spaces of all types will be increasingly important in maintaining liveable communities. A type of green space common to suburban communities is residential open space.

The changing housing pattern demands a more intensively used, hardy, and more consciously designed landscape setting. This eventually extends to the creation of well-planned passive and active recreational areas on decks, podiums above car parks as well as the ground making imaginative use of levels and landscape elements.

The design has to be functional and sustainable, producing spaces with physical conditions with an elaboration of rich multi-tasking performance of urban green space for a modern urbanized society. It has to cater to the basic, recreational and social needs of the occupants, to suit their use such as comfort, shelter, protection and recreation.

Ideas begin with what nature has already provided -- topography, soils, climate, water and indigenous vegetation. Then the landscape designer can intervene by manipulating what exists and by adding new elements - trees and shrubs, ground covers (plants or paving), walls and fences, architectural structures, water courses, pools and fountains, lighting, seating and sculptural forms. Dense plantations of trees and perennial shrubs are ideal as thickly vegetated areas are helpful in combating noise and air pollution. Thickets of vegetation add freshness to the air and also lower temperatures slightly. They form an oasis in the otherwise hard-concreted areas. Water adds life to the environment, but water being a limited resource, needs to be used judiciously.

P1B IVY

CONTEMPORARY + GRACE

By Architecture Discipline

P1B IVY is a modern, contemporary, and graceful residence. P1B IVY, designed by Architecture Discipline, is the epitome of modernity. The penthouse, 'The IVY', next to the eminent 'The Laburnum', Gurgaon spreads across 780sq.m. While including a handful of classical elements, the residence embodies a sense of inclusiveness and class. The spacious penthouse, designed by the design team led by Kashika Nanda, spans across three levels, including a spacious terrace. A diligently curated colour palette in red, blue, and green hues pops out, adding a sense of life to the residence. The design provides a required depth while exuding bright vibes that instantly uplift the mood of the residents.



P1B IVY is a modern, contemporary, and graceful residence designed by Architecture Discipline

Written by: Sarvesh Joshi

Photographs by: Jeetin Sharma

The Entrance Lobby

This luxuriously designed penthouse with its bright and ‘out-there’ character is a ‘happy home’ spanning across three levels. The frosted glass entrance door leads people to the entrance lobby. The pattern on the entrance door adds a transposable character, giving visitors a sneak peek of the house even before they enter. On entering, there is a double-height bookshelf in black. The bookshelf’s design creates a sense of mystery. The flooring with a wooden finish complements this bookshelf in black. It thus makes the space more appealing.

A hallway leads to the living room and other areas when one moves forward. The hallway features an extension of the bookshelf, drawing the people’s attention toward the living room and adding the required sense of depth to the space.

The Study, the Guest Room, the Kitchen, and the Terrace

Next to the double-height bookshelf to its right is a study that maximises daylight penetration into the space. The guest room is near the study and contains a bed and sofa. The sliding window in the guest room opens up to the landscape outside and brings ample light into the space. Right opposite the kitchen is a terrace featuring a spacious, designed landscape area including a pool with planters, which complements the overall vibe of the residence. The design, with the presence of natural elements, provides a wholesome environment for family gatherings.

The Living Room and The Dining Room

Adjoining the terrace is the longer edge of the living room, bringing in ample natural light and providing ventilation to the space. The living room with the sofas in bright shades like green, red, and blue looks stylish and feels comfortable. A white sofa with butterfly prints is the highlight of the space. The window has louvres in a light brown shade. Seating in red and green hues adds a sense of playfulness to the space. The purple wall complements the sleek and classy sofa placed against it. Teak wood-finished flooring enhances the overall appearance of the space.



The flooring in wooden finish complements this bookshelf in black



The terrace is designed with natural elements to look and feel cheerful



The living room with sofas in bright shades like green, red, and blue looks stylish

The Staircase

The staircase painted black with a teak finish balustrade has multiple layers of paint beneath it. Layer upon layer, each coat has its way of narrating a story, seamlessly weaving the narrative and directing people towards the upper levels. With the continuation of the bookshelf, there is a sense of direction and focus on the primary bedroom door, made of antique teak. In continuation with level 1, the hallway on the second floor also features a black bookshelf. The gracefully designed hallway leads one to the three rooms on the floor.



The staircase painted in black add to the existing sense of modernity

The Daughter's Bedroom

Designed to stimulate an adolescent mind, the daughter's bedroom incorporates a riot of colours. The daughter's bedroom features a Goldilocks bed, an animated dressing table, and a multicoloured timber-painted headboard. Placed against the multicoloured wall, the goldilocks bed in white bedding balances the colours out. A large window, beside the bed, brings in ample sunlight. The dedicated study area features a dynamic multi-purpose table promoting the creative learning process.

The Primary Bedroom

Located beside the daughter's bedroom is a spacious primary bedroom. Placed in the centre of the room, the bed faces a large window in front of it, which opens up to the balcony. Thoughtfully placed against the white-coloured wall at the entrance, the purple sofa adds to the existing feeling of luxury in the space. Thoughtfully curated antique lamps used in the design enhance the eclectic appeal of the space. The colour palettes include black, white, and purple, which come together to form a wholesome design which is pleasing to the eyes. Along with the bathroom is a large walk-in wardrobe designed to match the luxurious lifestyle of the residents. Partially covered in hues of black and white, the bedroom is a definition of sheer class.

The Son's Bedroom

The son's bedroom is at the other end of this level. With a blue-coloured theme, the space comprises multiple design elements in shades of the same colour. At one end of this room, stacked against the wall, is a bunk bed in yellow contrasting the theme of the room. The flooring in the son's room is science-inspired and features various signs, symbols, and patterns related to the subject. Beside the bed, is a wide window, bringing in ample sunlight. Across from this window is a wooden-textured study table. The entrance to the bathroom and the walk-in wardrobe are beside the bed. The walk-in wardrobe caters to the anthropometry of a child, making it more efficient to use.

The Den and the Terrace

The family den on the third floor imbibes a peaceful vibe. The terrace, with multiple accent, features and attached to the den, provides a spectacular view of the town. It is a canvas for weaving unique experiences and creating fresh memories while reflecting each resident's personality.

Curating the Most Efficient Storage Units for the Bedroom



Shivani Ajmera and Disha Bhavsar

Quirk Studio

A chest of drawers and walk-in wardrobes are some of the conventional storage pieces in a bedroom; however, we often miss out on utilising small nooks to their advantage. With homes getting more compact, finding storage solutions is becoming a common challenge.

One way to supplement storage is using built-ins concealed within the space. Storage units in the wall with flush doors masked in the same colour and disguised with aesthetic treatments like mouldings can also work effectively. Other than walls, it is also a good idea to pick dual-purpose furniture, for instance, beds with shelves or drawers--or opt for a hydraulic bed that allows you to store all your essentials underneath it. If the furniture layout accommodates an ottoman, use it to house pillows and quilts. If your bedroom has a mid-height window, you can create a ledge for seating and provide storage underneath, adding utility and functionality to its design.



STUDIOS90

SIMPLE, EFFICIENT, INTRIGUING

By Sanjay Puri Architects

Written by: Sarvesh Joshi

Wrapped in a tinge of culture, Studios 90 is a residential project located in Kodla, Karnataka. Designed by the renowned design firm, Sanjay Puri Architects, the project spans over a plot area of 53,200 sq. m. with a construction area of 10,400 sq. m. The angularly stepped layout of the residence comprises studio apartments, a guest house, and a hostel to house the employees associated with the new cement plant. At first glance, the structure appears to be extremely unique, inviting the visitor to explore the intricacies of design. Designed with the notion of displaying the all-inclusive cultural richness of India, the project can be described as a composition of coloured cuboids. Nestled in the exterior building envelope, the colours used for the interiors of the protruding cuboids pay homage to Holi, the India festival of colours.



The studio apartments and the guest houses feature large windows to bring

“

Opening up to a balcony, the living room and the bedrooms, allow the influx of natural airflow and natural light into the inside environment.



Known for his technical prowess, Architect Sanjay Puri has designed a climate-responsive residence catering to the hot climate of Kodla, Karnataka. The temperature exceeds 35 °C for eight months of the year in this region. This called for a design that brings in enough airflow and natural light. Planned in a manner that the buildings open up to large landscaped areas & a large playground in the north-east direction, the design successfully manages to light the rooms with natural light and provides for an adequate amount of airflow.

Designed to be spacious and comfortable, the apartments cater to the client's brief. The apartment units and the guest houses share a layout which takes care of the requirements of the respective user group. Designed with the notion of having a simpler layout, the apartment block and the guest houses comprise a housing unit including a staircase block leading to a living room/T.V. room, a kitchen and 6 bedrooms respectively. Designed in a way to accommodate 10-12 people, the living room exudes a warm and comforting feeling. The design incorporates minimal furniture and comprises a sofa, two armchairs, and a centre table in the living room as well as two single beds in the 6 bedrooms.



The facade creates an illusion of multiple cuboids being stacked upon each other

The hostel block is a manifestation of smart and effective planning. The linearly designed hostel block comprises 6 bedrooms and a T.V. room for recreation. Leading to the accommodation spaces is the linearly designed corridor with an attached staircase block and a lift. The bedrooms have separate bathrooms and restrooms. Spaciously designed rooms have two beds, two study tables, and a wardrobe. This perfectly caters to cater to the basic storage requirements of the users. Opening up to a balcony, the room manages to bring in ample sunlight and ventilation. Designed for the purpose of recreation, the T.V. room acts as a gathering space and can accommodate 12-16 people. Merging itself with the context, an intelligent design adds value to the cultural and traditional landscape of the area it's set in. Paying homage to the festival of colours, Holi, Ar. Sanjay Puri has incorporated the concept of colours in the design. Colours including red, blue, and yellow play an important role in highlighting the protruding cuboids.

The facade definitely exudes the signature flamboyance style adopted by Mr Puri. However, it is the intelligent approach towards designing efficient habitual spaces is that stands out the most. Built to be efficient and context responsive, Studios 90 is a simple project exuding a warm feeling.



“ Built economically, the project incorporates materials like fly ash bricks for construction. Adopting simpler cues including rainwater harvesting, water recycling, and north orientation reflects on the overall quality of the design. Making efficient use of electrical energy that is harnessed from the residual cement plant nearby, the buildings are lit.

COLSTON

TRENDS AND TECHNOLOGY IN BATHROOM DESIGN



ANIL AHUJA

Managing Director

Colston Bath & Spa Pvt. Ltd.

Bathroom design trends have always been on the move. Designers are rethinking bathrooms. There's more to bathrooms than places that need cleaning. As bathroom design trends have grown, so have the needs and expectations of consumers. In recent years, various innovations like chromatherapy, music therapy, and infrared saunas have created a new and exciting design aesthetic for bathrooms. From countertops to faucets and everything in between, modern-day bathrooms have become an oasis of peace, relaxation, and serenity.

Anil Ahuja, Managing Director at Colston, talks with Biltrax Media about the latest products from Colston that are redefining bathroom design trends by giving new impetus to the architecture of bathrooms.

Driven by innovation and creativity, new-age design inspires the industry to eschew conventional paradigms. The AEC industry longs for unique design elements that encourage designers to be bolder while plotting different spaces. For instance, bathrooms can make a lasting impression on the user and help them achieve that much-needed level of relaxation. Colston, a brand that resonates with luxury and innovation, brings forth a complete decorative and designer bathroom collection to create a refreshing space to start or end an exhausting day.

A Modish Connection

Bathroom design has developed from a mere enclosed space with showers and taps to elegant spaces with impactful elements of well-being such as jacuzzis and bathtubs that help raise the bathroom's luxury quotient. Including these fixtures in the bathroom can help relax the mind and body with qualities like muscle relaxation, anxiety reduction, and improved mood. Being in a personal space like the bathroom makes you feel peaceful. Colston's Whirlpool collection illustrates customised modes of relaxation using warm water to increase blood circulation and improve the heart's functionality.

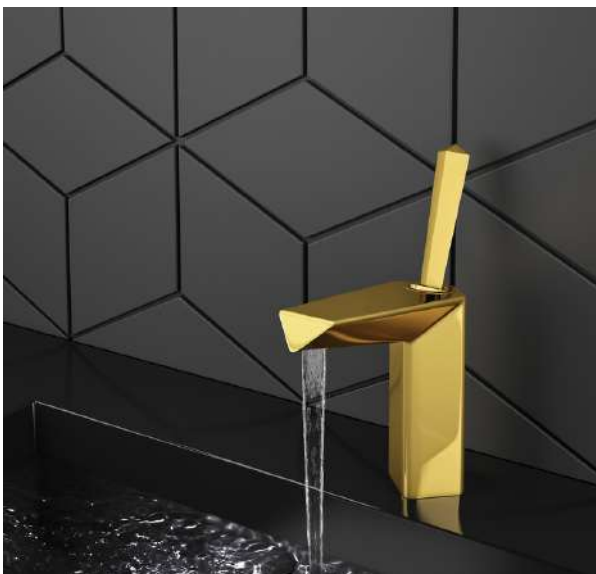
Prodigious Elements

A bathroom represents its users. It should reflect their lifestyle and how they would like to begin or end their day. Adding a steam room or sauna lounge in the area will elevate the space. A steam room or a sauna lounge interprets a personal space dedicated to oneself entirely. Setting up a modernised sauna guarantees an ambience of total relaxation of the senses. The bath ware brand Colston has developed models that incorporate high-tech features such as Chromatherapy, Bluetooth media, and Music therapy for an ultramodern vibe in the bathroom. The occupant's peace of mind is paramount. This very thought gets contemplated in their Infrared Sauna lounge range. An infrared heat source which is easier to maintain and offers the ultimate comfort and relaxation to promote the user's wellness powers the unique Sauna set.

Attention To Detail

Though compact, fixtures like faucets, shower units, basins, and minor sanitary ware play a supreme role in uplifting the bathroom. It is this combination of sublime materials, an eye-catching colour palette, and quality materials that emanate luxury and style in these areas. Bathrooms have extended from the concept of basic designs toward more eclectic designs. Contemporary fixtures have risen from rigid shapes to more organic designs and forms. The Debanos series by Colston exemplifies the idea of being original and exceptional, with nature-inspired colour combinations for several products- customisable as per the user's mood.

“Bathrooms serve as a meditative space for the user when designed with the right ideology and holistic approach. A serene bathroom setting keeps the mind and soul at peace while being in a physical and mentally relaxing zone within your comfort space.



10 Tips on Maintenance and Living with White



Rohina Anand Khira

CEO and Founder, AA Living

- Make sure all the shades of the white match. This is something most people don't think of when mixing and matching furniture from different stores.
- Try keeping the rest of the room within a maximum of 3 shades of different white.
- Eggshell is the safest choice.
- Shades of white can look different in different lighting, so choose wisely. You don't want the room to end up looking like a sterile shade.
- Take your shoes off – it's simple but effective.
- Keep the space dust-free, and vacuum regularly.
- Avoid white in high-traffic areas that would be hard to maintain.
- Spot cleaner sticks should be kept handy and used immediately. Be careful of sweat stains.
- Ensure enough ventilation in the space so dust doesn't accumulate.
- Make sure your white-painted wood has some kind of protective coating so the surfaces are not sensitive to staining.
- Add texture to give the room dimension; don't keep white surfaces too plain. Things like tufted cushions or textured rugs work well.



URBAN ZEN

ENABLING TIMELESS AND EXPERIENTIAL LIVING SPACES



ROHIT SURAJ

*Principal Architect
Urban Zen*

Instilling fascination, elevating the human spirit, and starting a conversation are the cornerstones of Urban Zen's design story. The design fraternity lauds attention to detail. Urban Zen acknowledges this attention to detail.

It has become known for its bold designs that deliver a powerful message. Urban Zen creates living spaces that are timeless, experiential, and innovative in terms of design.

A passionate proponent of independent thinking and creative change, Rohit Suraj, Urban Zen's Founder and CEO, talks to Biltrax Media about Idyllic Residential Spaces and their importance.

What 3 factors make up an idyllic residential setting?

An idyllic residential setting brings peace to residents after a long day. The three factors that contribute to ideal residential settings include the optimum usage of space so that a home caters to all the needs of its residents without being congested or cluttered. Every home reflects the personality of a client and their family and expresses their desire to create their own oasis. By incorporating nature into the design, indoors and outdoors, you can create a peaceful environment. Improving the residents' well-being is crucial.

A home tells a story and expresses a person's or family's interests. How does an architect design a home that imbibes the owner's characteristics?

With self-expression becoming more important in residential design, trends are fading. People enter a store with a clear idea of what they want. With décor, this self-expression reflects even in the smallest details. The advancement in design technologies has influenced people's perspectives. Because of this change, the clients demand customised ideas and innovative amalgamations that create a harmonious milieu. While designing, we have the power to cast a spotlight on any element present in the entire space. We then make sure the design elements balance and complement each other. We prepare material palettes and mood boards under the client briefs, design aesthetics and the need to create experiential living spaces that transcend eras.

Inclusive design is about making places everyone can use. Could you elaborate on the common elements of access and inclusion for residential design?

An inclusive design makes places accessible to all, regardless of age, ability, and circumstance. It is based on simple principles of design that cater to the widest range of people. For example, a barrier-free ramp design instead of a conventional staircase is accessible to all. Visual interfaces in signage are safety features that cater to the elderly, physically challenged as well as children.



The design elements balance and complement each other

The lockdown forced everyone to stay indoors. How can we integrate greenery and open spaces into built residential spaces?

Among many features of lavish homes, I frequently consider outdoor spaces and recreational spaces as key components. Many lavish homes feature multiple outdoor spaces as part of their plans. We desire outdoor space elements of any design. One of the major concerns with open space is to accommodate it spatially in the design while adhering to the by-laws and financial budget. It is an even more imperative requirement in today's scenario, where people are spending more time confined to their homes.

One of our projects in Hyderabad, House of Tropics, is all about nature and making the 'inside' feel like the 'outside'. While working with existing built spaces, it's important to make the most use of previously unused corners, landings, balconies, or terrace spaces. Integrating greenery is both a conscious and ongoing effort when working with an existing home. Koi ponds, terrace or balcony gardens, and green walls are a small part of bringing nature into your home.

Work from Home is one of the significant trends post-pandemic. How can we efficiently incorporate workspace environments in residential spaces?

Working from home is both a blessing and a challenge. To function effectively in the middle of a chaotic and busy household, the individual would need a space that is private. Home offices need to be outfitted with the latest technology and automation to ensure comfort and an efficient work environment.

Although working from home has pros and cons, it doesn't have to be boring or difficult. Comfort is essential to ensure the viability of long hours of work. This concept should apply to the design and ergonomics of home offices. People require open air and ventilation instead of being cooped up in a room when not on work calls. Balconies, terraces, and outdoor seating areas converted into mini working spaces make the best of both worlds.

Urban Zen believes in designing and delivering living environments that are timeless, experiential, and incorporate innovative design innovations. The spaces aim to be bespoke and flawless, and make working from home both a seamless experience and an aesthetic delight.

How can the planned residential space promote community interaction and development to create a sense of belonging and responsibility towards society?

Today, community spaces like clubhouses, indoor and outdoor activity spaces, and large gated communities form mini townships in their own right. It's important that we design keeping sustainable, user and crowd-friendly spaces in mind. Eco-friendly materials such as solar panels, wool panels, recycled plastic and wood can create efficient and user-friendly environments. We can achieve a better society and a brighter future for all, through group composting and effective waste disposal strategies. With the average footfall being higher than normal for public spaces, the materials used and design of a space must meet the functional requirements. They also need to stand the test of both time and extensive usage.

What are you currently working on in the residential space?

We are currently working on several luxury homes, large gated communities, and many other residential spaces across the economic spectrum. At present, we are working on a large-scale luxury home that will take a unique approach to spatial organisation. As a result, the house runs on a horizontal axis instead of a vertical one. This is an experimental, experiential, and elevated approach to luxury living.



Integrating greenery is both a conscious and ongoing effort when working with an existing home.

42 MM ARCHITECTURE

DECODING IDEAL RESIDENTIAL SPACES



RUDRAKSH CHARAN

Principal Architect

42 MM Architecture

An ideal residential space is not born, but sculpted. Preliminarily speaking, an ideal residential setting reflects its user's personality. This can manifest itself as a striking entranceway or a cosy fireplace; it can even be a smart home system or naturally lit space. The architecture of the idyllic residential space comprises everything from technology to personalisation. Rudraksh Charan, the principal architect of 42 MM Architecture, speaks to Biltrax Media about the design principles of an ideal residential setting.

Experimenting with the concept of 'living', Rudraksh walks through all the components of residential architecture that make up an ideal and highly desirable residential setting. He throws light on the residential landscape, open spaces, trending materials, technology, personalisation and artwork, and sustainable luxury.

What 3 factors make up an idyllic residential setting?

An ideal residential setting comprises –

- A reflection of its user's personality
- Personal dens that are unique to individuals that help them unwind
- Technology that is integrated with the spine of the house, which makes it efficient and effective

You often explore several interior design themes for your clients' houses. How can one add personality and character to their homes using design themes?

Our design philosophy is to create the reflection of our end-user. The end-user can be a single person or an intellectual public group. Understanding, interpreting, and reflecting on the client's personality embeds meaning in the built form. Our buildings do not contradict the personality of its user unless we desire it to be a contradiction. Hence, our emphasis is highly on the spatial arrangement or planning and the research to adopt an architectural style that can express the interpreted meaning of our built form. The style is not a part of our process, but the research that leads to it.

At the inception of a project, there is a preliminary study that we do with the client, to understand their personality and personal liking. This helps us form and underline an interior style for the clients. Once we identify the fundamental concept or the style that conforms to their personality, we work the interior design details to embody the same. For instance, the house of a flamboyant client differs from that of a minimalist. Even if both have a bend towards a classical theme, the former leans closer to ornate classical while the latter tends closer to neoclassical style. With a modern theme, plurality and singularity in the material palette choices, help us identify with the client's personality. Hence, our design process highlights the importance of understanding the end-user at a very early stage.

What new materials will rule residential construction for the following – (a) Wall Panelling, (b) Flooring, and (c) Dining Table Tops

Wall Panelling–Concrete panels

A monolithic minimalistic look and a seamless finish is the new trend in interior design. Concrete panels provide that everlasting look with minimum joints.

Flooring – Wood

There is no comparison to the comforting tactile finish of wooden flooring. They are ideal to use in spaces like the Living Room, Master Bedrooms and Kids' rooms. These are spaces you live and relax in. The wood finish ensures a great experience when you walk barefoot, and it ensures no injury to children, even if they run and fall. The newly engineered solutions for wooden floors have also made them much easier to maintain.

Dining table tops – Fiandre tiles

Fiandre tiles give the effect of an exquisite stone at nearly half the cost of the actual stone. It is easy to maintain and has a good shelf life.



How can we integrate greenery and open spaces into built residential spaces?

Open spaces or the spaces between the buildings complement the quality of indoor spaces. We do not treat the external spaces as residual areas but carve them out of the built mass. They often become the centrifugal element along which the building takes shape. The relationship between the indoor and the outdoor space is such that both together get conceived as a single entity. The outdoors extends to the indoors and vice versa. In our projects, the green features are experimental and crafted to disseminate a genuine sense of luxury.

The design of green areas keeps in mind the context and functional requirements of the space. In one of our projects, a penthouse features a double-height terrace with an expansive view of the golf course. We conceived this terrace as an extended living room as a supplement to the double-height lobby. The most iconic design elements are the planters hung on the terrace as an art installation to get an unobstructed view of the golf course.

In another project, we added a new dimension to the basement by introducing a sunken courtyard that eliminated the essence of the basement being under the ground. The sunken courtyard is an extended garden and a source of natural light to the art gallery in the basement. Another green feature is a light well courtyard that ensures no compromise on light and greenery within the house. The light well also makes up a green wall within. This vertical green artery unites all floors with a flush of natural light and greens. The pool terrace is another typology that we paired as an extension to the entertainment area, creating an exquisite experience of luxury. Therefore, different built masses provide different opportunities to craft a variety of green features for the building. This blurs the boundaries between interiors and exteriors, which strengthen the spatial quality of the space.

While designing premium residential properties, art finds a prominent position in shaping the design language. How do you pick art pieces for your clients?

Selecting art and accessories gets woven in when we define the aesthetic of the place. They act as tools or elements of the architectural language. Every space has a story. I sometimes select the art as a complimenting or captivating part of the whole. There is a pre-defined rhythm to each space wherein the art and accessories are in sync with it. The idea is to exaggerate the flavour of the house and give visual sneaks into the clients' interests. It is one of the most effective ways of captivating a person's history in his/ her home.

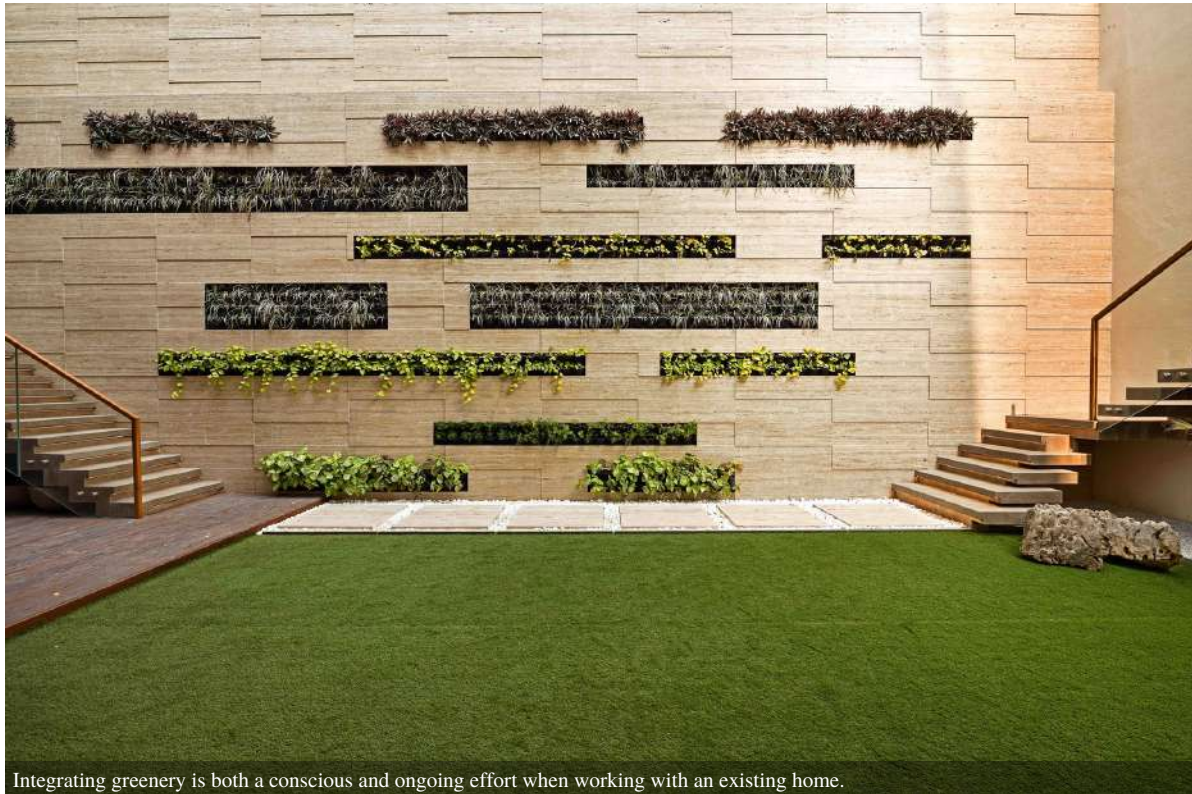
Please enlighten our readers with the conceptualisation and design of the project, “Verdant Villa”.

Designed to let nature dance within itself, the planning of this house carefully unites each space with green buffers. A layered convergence of volume that expresses itself distinctly in its spatial planning, facia skeleton, and volumetric geometry. It is a farmhouse that welcomes the beautiful landscape and embraces the scenic beauty through a gradual gradation of spaces. The sliced geometry and its intersection with the green buffers find their rationale in the spatial syntax of the house. We fabricated layers of public, semi-public, and private zones designed to highlight the volume distinctly.

We segregated each area with greens that have a unique characteristic of their own. The public zone is a see-through block of glass as an expression of welcome. The semi-public area is carefully eclipsed in parts, with greenery flowing into it from the expansive private lawns of the home. This slowly gives way to the intimacy of the inner sanctum-the private part of the house. We oriented the house east-west, and each segment embraces the east and west sun entering it, through the permeable layers of green buffers. It ensures ample light in every corner of the house while filtering the heat out through the green buffers.



The Verdant Villa is designed to let nature dance within itself, the planning of this house carefully unites each space with green buffers



Integrating greenery is both a conscious and ongoing effort when working with an existing home.

Often, people view sustainable luxury as an oxymoron. Is there anything designers can do to dispel this myth and make luxury a sustainable and evergreen concept?

We can achieve sustainability in a fourfold process, beginning at the planning stage. The adequate use of renewable resources such as natural light and plants can refine the spatial quality and visual appeal. Following this is the choice of the right materials, giving preference to natural and recycled products such as reclaimed wood, cork, and ceramic. Technology plays the third role. Using energy-efficient lighting fixtures, double-glazed windows and automation can optimise the energy consumption based on the user's needs. Last, revamping old furniture can accessorise the space, where one can create art from scraps and locally sourced antiques. Therefore, by inducing these four steps to any project, be it luxury or not, the project becomes sustainable.

What are you currently working on in the residential space?

We are currently working on some luxury villas in Raipur, super-luxury homes in premium societies in Gurugram, niche residential projects in Delhi, and farmhouses in Lucknow.



Choosing the right colour scheme for your living rooms



Gaurav Gupta

Principal Architect, Art Ador

The living room is one of your home's most social areas. Making a strong first impression and establishing the tone for the rest of the house begins with the decor. What do you do first? By deciding on a colour palette to design your decor around. Here's a quick start guide to help you get started.

Use colours that are in contrast to each other.

A symmetrical design and a sense of cohesion can be achieved with an attractive blend of two or three clashing colours. Start with a base colour for the general scheme, then layer in contrasting hues with furniture and accessories. Experiment with gold and silver tones for an opulent look.

Introduce an Accent Colour

Choose a neutral or light colour for the living room walls and transform one wall into a focus wall. Instead of a solid colour, you can opt for stylish patterned wallpaper. You could also combine various textured surfaces, different furnishing materials or a bright accent piece of furniture that will stand out amidst the rest of the space.

Add a pop of colour to the room

Make one of the living room walls a focal point by painting it a neutral or bright colour. You can use attractive patterned wallpaper instead of a solid colour. You might also use a variety of textured surfaces, different furnishing materials, or a bright accent piece of furniture to make the space stand out.



“

Colour selection should be pleasurable and not stressful in any way. Don't make hasty decisions. Visit a paint store, speak with the specialists, bring home as many swatches as you like, and hang them up anywhere you want. Keep things tidy and put your most prized treasures on display.

Give Monochrome a Chance

A stunning design plan can be created by carefully selecting hues, tones, and tints of the same colour. Remember to include these in many parts of your decor, including surfaces, furniture, furnishings, and accessories. Note that adding white to a base colour creates tints, but adding a darker grey or black creates shades and tones.

Use a neutral colour scheme.

The living area looks fresh and large thanks to shades of grey, beige, and off-white. A tone-on-tone colour scheme, in which a single colour is presented through various textures, materials, and patterns can create a serene and pleasant atmosphere.

Use a variety of colours

If you enjoy colours, don't limit yourself to a limited colour scheme. Introduce a multi-hued carpet, throw cushions, drapes, or colourful wallpaper to create a vivid design by mixing and matching colours. All of these surfaces mix well together and are suitable for creating a rich colour scheme.

Biltrax Construction Data is tracking 20,000+ similar projects on their technology platform.

@ contact@biltrax.com

www.biltrax.com